

# SEALUX Reg 20

WHITE, 20mm wide trim

BEHIND & OVER TILE BATH & SHOWER SEALING KIT

## Installation Guide

READ ALL INSTRUCTIONS BEFORE YOU START



Each Sealux strip has a green tape applied to the inside face of the strip. Sealux-N silicone cannot bond to this tape after it cures. When joint movement occurs between the ledge and wall, the Sealux-N silicone simply releases off the green tape (under tension) and stretches to accommodate joint movement.



1. Measure and cut strips to length.



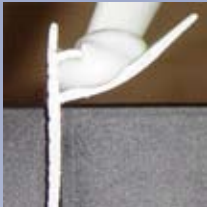
2. Pare off frays left by saw blade and check strips fit in position.



3. Tear off removable leg if required to lower outer edge of strip onto ledge.



4. Wipe ledge squeaky clean with alcohol wipes.



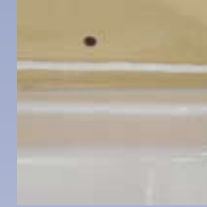
5. Cut nozzle for 5mm hole. Place mitre box on bench and insert middle strip (if any) upside down across mitre box blade slots. Arrange to support remainder of strip steady. Starting at one end lay a 400mm (18") line of Sealux-N in strip.



6. Level Sealux-N across strip with the spatula. Continue to lay and level Sealux-N across strip in 400mm stages till complete. Redistribute Sealux-N if required with spatula. Flush up ends with Sealux-N silicone.



7. Mark ledge 15mm out from wall. Using your finger under nozzle as support and your fingertip against wall as guide, lay a solid line of Sealux-N on ledge no further than 15mm out from wall (start just inside the 15mm mark).



8. Mark wall 20mm up from ledge. Lay a 5mm diameter line of Sealux-N on wall 25mm above ledge (start on the 20mm mark).



9. Rotate the strip into position over joint as shown fusing Sealux-N in strip with Sealux-N on ledge. Press strip firmly against wall and down onto ledge. Remove surplus Sealux-N (if any) off ledge using spatula with corner (not rounded) against the strip.



10. Proceed with remaining strips in the same manner as the first. Butter corners slightly to ensure Sealux-N fuses across meeting strips under mitre joints. Install end caps if required.

### Addendum for Over Tile Installations

**Step 3** Tear off removable leg. **Step 3a** Notch strips with sharp knife to form 5mm hole through corners. **Step 4** Remove old sealing material. Wipe wall and ledge squeaky clean with alcohol wipes. Lay strips loose in position and apply masking tape 1mm outside the upper edge of strip onto wall to avoid smearing Sealux-N on tiles. Fill cavity (if any) between wall and ledge with Sealux-N flush with face of wall. **Step 8** Increase the diameter of Sealux-N over uneven tiles so there will be enough to form a solid bond between strip and wall and ooze out over strip when pressed against wall. **Step 9**. Ensure Sealux-N oozes out over top of strip and add Sealux-N with spatula if required prior to pressing strip fully against tiles. Do not press strip against wall so firmly as to cause it to spring back from wall. **Step 10** Remove Sealux-N off wall with rounded corner of spatula. Apply Sealux-N into hole at mitred corners and carry bead on up over meeting strip upstands to seal corners. Remove masking tape and rub Sealux-N smooth again after it has skinned (5 mins.) using soapy water. Leave installation for 48hours.



**Step 3a**

Use sharp Stanley knife to notch strips at mitre joints.