

SEALUX - Standard Spec

Installation

SEALUX- High Spec



SEALUX PRO 25

BEHIND TILE ONLY
(A 25mm wide seal for low porous body tiles)

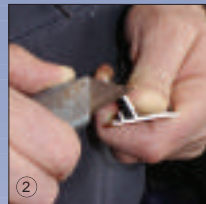
2/3 TUBE OF SEALUX-N REQUIRED / LENGTH

CUT SEALANT NOZZLE TO EXPOSE 8mm DIAMETER HOLE

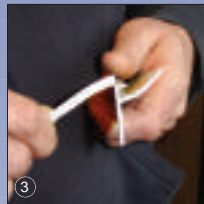
DO NOT REMOVE GREEN TAPE FROM INSIDE STRIP FACE!



1 Measure and cut strip



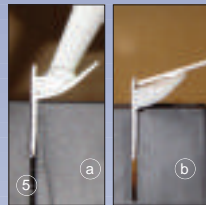
2 Carefully remove frays left by saw cut!



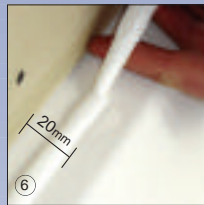
3 Tear off removable leg if required after testing



4 Clean ledge using Sealux alcohol/meths wipes



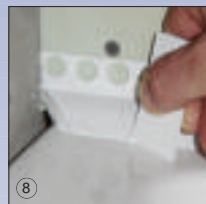
5 (a) lay Sealux-N in strip
(b) level Sealux-N across strip



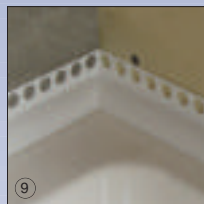
6 Lay Sealux-N on ledge using finger under nozzle as guide



7 Lay strip over joint fusing silicones



8 Remove excess Sealux-N off ledge if any



9 Ensure silicone fuses across corner joints.

Which Strip is best for the job in hand?

Sealux 15 profiles are most suitable to seal joints where the gap between the vertical and horizontal surface is not greater than **4mm** and the thickness of the tile is not greater than **7mm**.

Sealux 20 profiles are most suitable to seal joints where the gap between the vertical and horizontal surface is not greater than **8mm** and the thickness of the tile is not greater than **10mm**.

Sealux 25 profiles are most suitable to seal joints where the gap between the vertical and horizontal surface is not greater than **12mm** and the thickness of the tile is not greater than **10mm**.

Refer to numbered photos when reading instructions and strip label for sketches.

- 1 Measure and cut the strips to your required lengths.
- 2 Carefully remove the frays left at saw cut edges.
- 3 Dry fit to check. If outer strip edge does not rest on ledge, bend the first 50mm of the removable leg back and forth (to weaken) and tear it off.
- 4 Wipe ledge with Sealux alcohol wipes or methylated spirits.
- 5 Commence installation with middle strip (if any). Insert strip upside down in Mitre Box and arrange to hold the rest of the strip steady.

Cut nozzle at slight angle for 8 mm diameter hole. Place nozzle in strip as shown and lay a 400mm line of Sealux-N in strip.

Level Sealux-N across strip with spatula as shown. Do not be afraid to redistribute Sealux-N as required! Continue in steps of 400 mm until complete.

- 6 Using finger under nozzle as a support and fingertip against wall as a guide, lay an 8 mm oval line of Sealux-N on the ledge so outer edge is 20 mm from wall. For Sealux Reg 25, lay a line of Sealux-N on wall *roughly* 15mm over ledge (no guide required).
- 7 Rotate strip into position as shown fusing silicone on ledge with silicone in strip.
- 8 Remove silicone (if any) off ledge with spatula.
- 9 Butter corners with Sealux-N to ensure silicone fuses across strips.



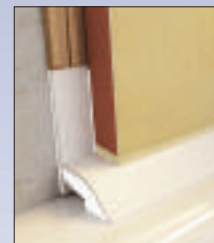
SEALUX PRO 15
(15mm wide)



SEALUX REG 15
(15mm wide)

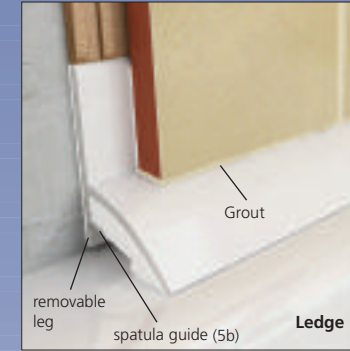


SEALUX PRO 20
(20mm wide)



SEALUX REG 20
(20mm wide)

Sealux 15 and 20 profiles are installed similarly. Refer to strip label for installation instructions.



SEALUX REG 25

OVER/BEHIND TILE
(A 25mm wide seal for high & low porous body tiles)

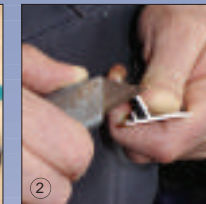
1 TUBE OF SEALUX-N REQUIRED / LENGTH

CUT SEALANT NOZZLE TO EXPOSE 8mm DIAMETER HOLE

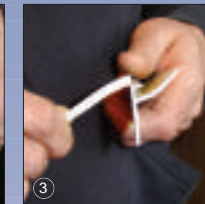
DO NOT REMOVE GREEN TAPE FROM INSIDE STRIP FACE!



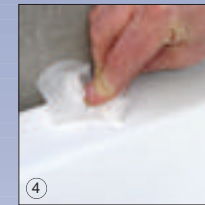
1 Measure and cut strip



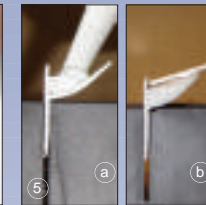
2 Carefully remove frays left by saw cut!



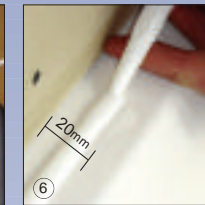
3 Tear off removable leg if required after testing



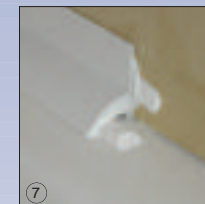
4 Clean ledge using Sealux alcohol/meths wipes



5 (a) lay Sealux-N in strip
(b) level Sealux-N across strip



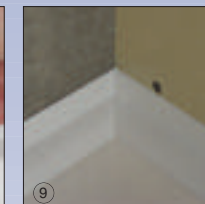
6 Lay Sealux-N on ledge using finger under nozzle as guide



7 Lay strip over joint fusing silicones



8 Remove excess Sealux-N off ledge if any



9 Ensure silicone fuses across corner joints.

Installation Strategy

The step by step installation method we promote is focused on clearly explaining a series of simple tasks that will result in a competent installation and maximise the long term benefits of our product. Seals are about leak prevention - not speed of installation.

By applying separate lines of Sealux-N into the strip (step 5) and onto the ledge (step 6) and fusing both together (step 7), we ensure a continuous watertight seal is established between the ledge and strip.