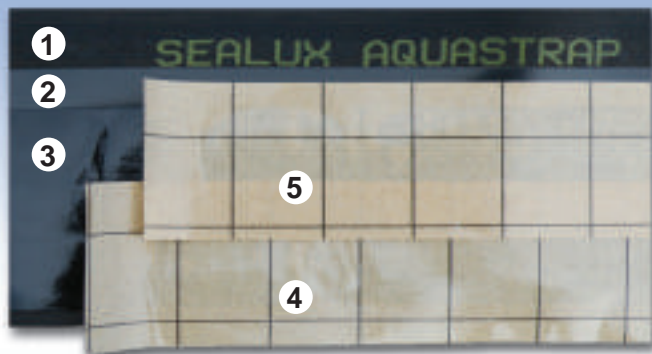


What is AQUASTRAP?



Aquastrap comprises of:

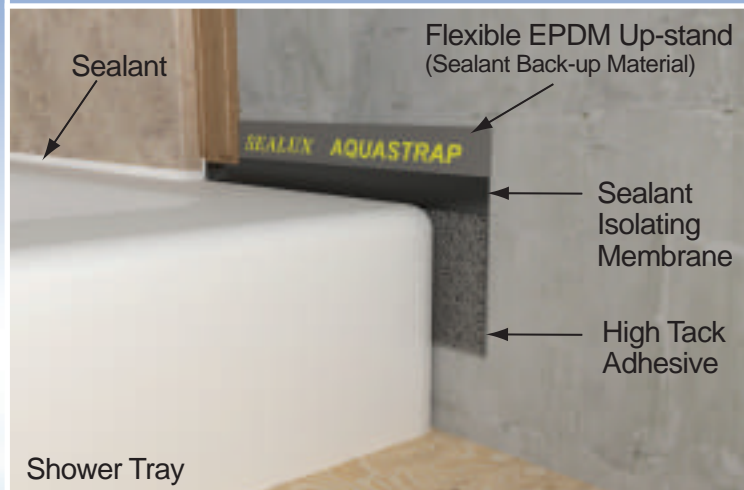
- 1) Flexible Up-Stand
- 2) Isolating Membrane
- 3) High Tack Adhesive
- 4) Lower Release Liner
- 5) Upper Release Liner

Aquastrap is supplied in various lengths in roll format with alcohol wipes.



Once installed Aquastrap forms a continuous flexible up-stand around shower trays and baths.

'AQUASTRAP and the Building Standards'



The following references to 'codes of practice' is offered as guidance on best practice and are not specifications that must be met. We ask you to consider the merit of these codes and benefit of compliance in the context of the product supplied. Please refer to above drawing.

BS5385-1:2009 Section 5.9.3 advises sealant back-up materials should be compatible with the sealant being used. In Aquastrap type products, the flexible EPDM up-stand acts as the inner backing material for the sealant.

BS6213:2000 Section 4.5.3 advises consideration is given to specific substrate compatibility characteristics which may exist prior to sealant installation.....(e) sealant discoloration which may occur from contact with other polymeric construction components within the joint. Appropriate substrate preparation is recommended.

Aquastrap meets the above recommendations through the application of an isolating membrane on the flexible EPDM up-stand to prevent direct contact with silicone and the resulting discoloration that may otherwise occur.

BS6213:2000 also refers to ISO 11600 as a means of identifying suitable sealants which meet a number of requirements, in particular movement accommodation.

Sealux-N silicone conforms to ISO 11600 F+G-25 LM
High Tack Adhesive was tested to ISO 8510-1 1990

Please refer to www.sealux.com for more detailed information on Sealux products and Building Standards.



SELF-ADHESIVE FLEXIBLE WATERPROOF UP-STAND SEAL

Shower Trays - Baths - Worktops



AQUASTRAP
'Intelligent
By Design'



What is Aquastrap?

Aquastrap is a flexible, durable, seamless, dry-fit up-stand joint seal that guarantees a waterproof joint between the ledge and adjacent walls.

Why choose Aquastrap?

Aquastrap's twin release liners facilitate a simple 'hang and bond' installation method that also improves the quality of installation (see inside page).

Aquastrap meets relevant BS5385 and BS6213 recommendations (see adjacent page).

Standard Lengths. 2.0 Mtr, 2.3 Mtr, 2.8 Mtr, 3.4 Mtr, & 4.0 Mtr Rolls.
Other roll lengths available upon request

Sealux Ltd. UK Tel: 0870 8760121 Fax: 0870 8760119

Ireland Tel: 01 298 9121 Fax: 01 298 9119

Website: www.aquastrap.com Email: info@sealux.com

Aquastrap is patent pending and a registered trademark.

We reserve the right to add, withdraw or modify the range without notice.

Product liability is limited to product replacement.

Installation Instructions

Installation video on www.aquastrap.com
 (Apply the same procedure for a bath or worktop)

(1-2) Roughen side wall surfaces with wire wool to improve adhesion with butyl tape. Clean roughened surfaces with alcohol wipe or methylated spirits. Ensure surfaces are dry & clean.

(3) Remove green tape off roll and save for later use (if required in steps 15-16).

(4) Peel back upper release liner (c) 100mm and press exposed upper adhesive face onto side wall ensuring the top edge of adhesive tape (a) is aligned level with the horizontal corner (e) of the shower tray.

(5) Peeling back remainder of upper paper release liner (c) to 100mm beyond the corner, press adhesive tape onto the shower tray side wall with thumb to 'hang' in position.

(6-8) Lift up the lower part of Aquastrap (d) at a right angle to the side wall, peel back (pulling downward) the lower release liner (b) to 100mm beyond the corner to expose the lower adhesive face.

(9) Press (from top down) the lower adhesive face against the side wall expelling potential air pockets in the process.

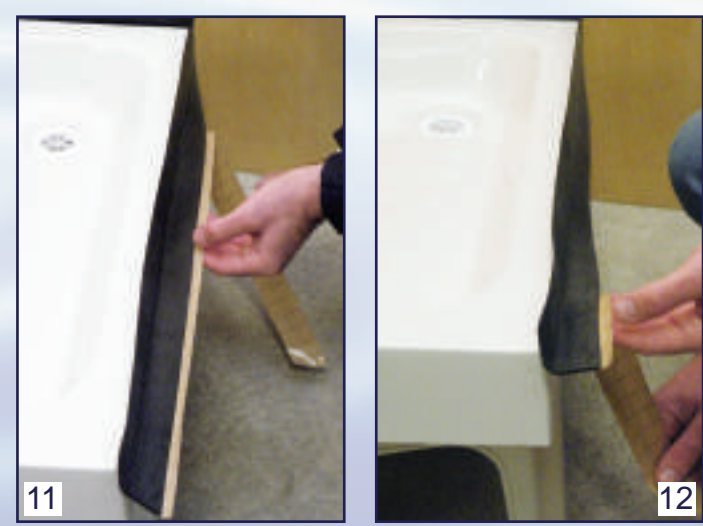
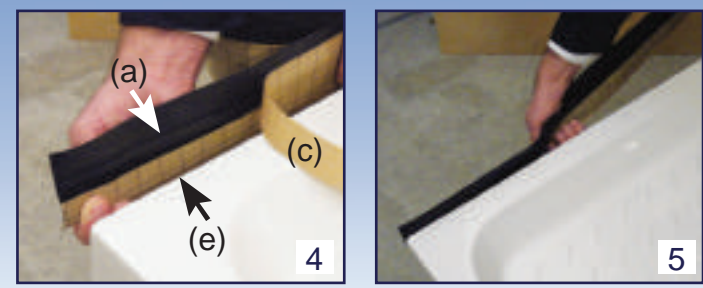
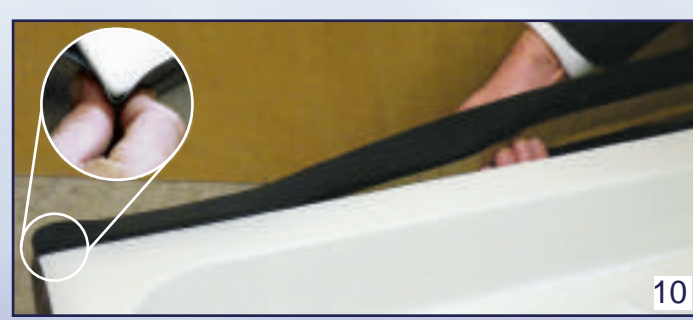
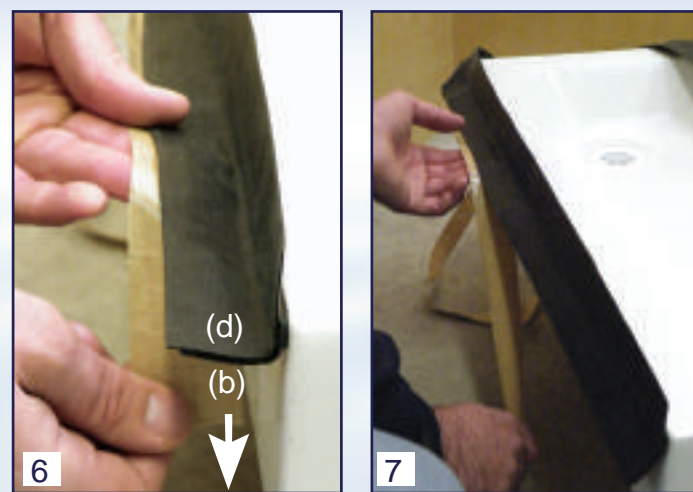
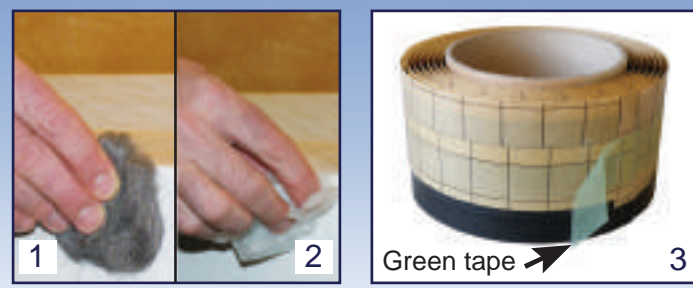
(10) If shower tray or bath has rounded corners, Aquastrap should be pinched as shown to maintain a 90° angle. Continue installing Aquastrap around the corners without stretching and onto remaining side walls in a similar fashion.

(11-12) Lift up the lower parts of Aquastrap at a right angle to sidewall before pulling down on the lower release liner.

(13-14) Press (from top down) the lower adhesive face against the side wall expelling potential air pockets in the process. We suggest using a seam roller to ensure full contact between adhesive tape and side walls.

(15-16) Exposed ends of butyl adhesive should be isolated from sealant. Cut 45mm strip of green tape (fig. 3) and cap butyl ends as shown

(17) Once located in position, the up-stand may be bonded to the adjacent wall with a polymer adhesive.



We recommend Sealux-N or an equivalent quality silicone is applied into the tile/ledge movement joint.