

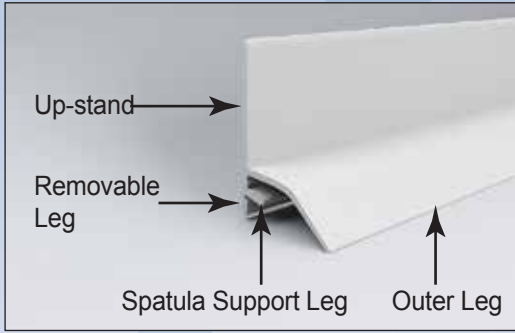
Sealux Reg 20 Profile Installation Instructions

Materials Required



Installation Video:
www.sealux.com

Sealux Reg 20 Strip Components



Installation Tools Required



1 Protect the tray or bath base.



2 Mark the strip end points on walls.

In a 3 sided installation the first strip installed will be the *middle* strip which should be measured and mitre cut at both ends. The outer strips should extend to the *outside face* of the shower door wall profile. This point should be marked on the walls.



3 Mitre cut all strips being installed.



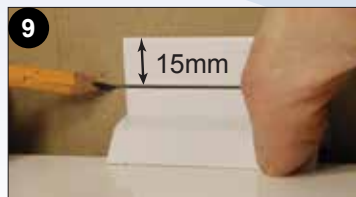
4 Remove saw cut frays. Dry fit strips. Ensure mitre cuts meet. Mark and cut strip end points.



6 If the strip outer edge does not sit on ledge, tear off the removable inner leg.



8 Wipe the ledge with alcohol wipes.



9 Using a strip off-cut in the fitted position, apply 4 marks to each side wall and ledge to define the position for sealant on the wall and the strip outer edge on the ledge. Draw a line through the marks applied on the walls.



10 Cut nozzle for 5mm hole. Holding the first strip upside down, apply a 400mm line of Sealux-N onto the green bond-breaker tape lining the underside strip surface. Level the Sealux-N across the strip resting the spatula on spatula support leg and strip outer edge. Repeat both processes until first strip is complete.



12 Lay a line of Sealux-N on the ledge just inside the 4 marks defining the strip outer edge position. Lay a 4mm (light) line of Sealux-N on the wall over the line applied through the 4 wall marks.



13 Rotate the strip into position fusing the Sealux-N in the strip with the Sealux-N on the ledge. Press the strip up-stand firmly against the wall to form a solid bond. Repeat same installation method for the remaining strips. Ensure the Sealux-N is left slightly proud of the mitre cuts to ensure it fuses around the corners.



14 Strips may be adjusted before Sealux-N cures to ensure mitre joints match. Flush up Sealux-N at strip ends and fix end caps if required.



15 Remove any excess Sealux-N on the ledge with spatula. Give the strip and ledge a final wipe. Installation now ready for waterproofing.



16 Strips may be adjusted before Sealux-N cures to ensure mitre joints match. Flush up Sealux-N at strip ends and fix end caps if required.



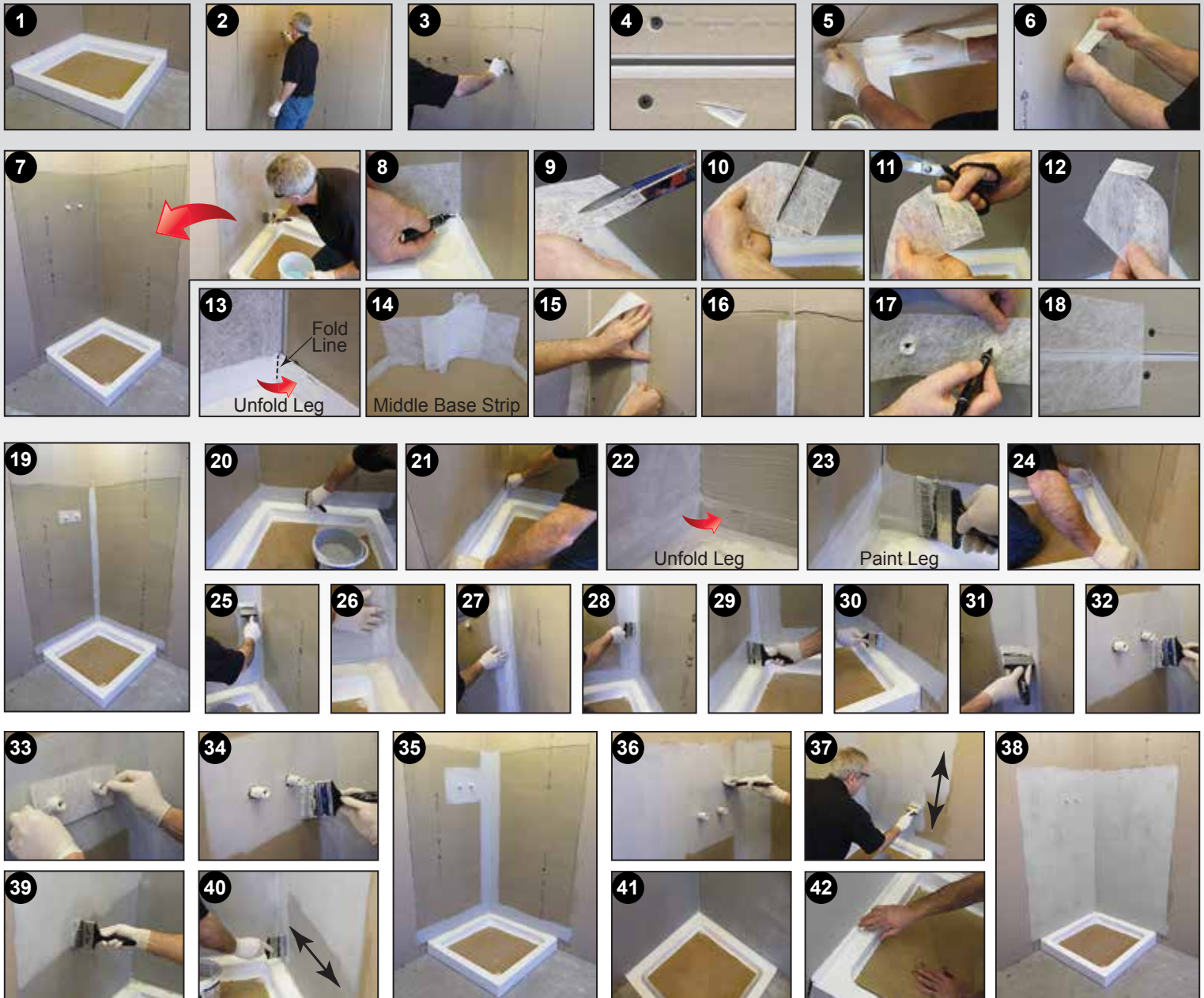
17 Remove any excess Sealux-N on the ledge with spatula. Give the strip and ledge a final wipe. Installation now ready for waterproofing.





BAL Waterproofing Kit Installation Instructions

1-6 Protect the shower tray or bath base. Mark out splash zone which should extend 100mm outside shower area and upward to shoulder height. Clean loose particles off the walls. Wall surfaces should be smooth, flush fill all recesses with filler. Apply masking tape over strip and ledge surfaces. Mask pipes and all fitting protrusions.



7 Shake, pour APD Primer into container and prime walls. **8-14** Cut the polyester base tapes and notch as required to ensure one leg can extend around each corner. **15-16** Laying the polyester tape against a wall for support, fold it into two halves pressing the fold firmly to form a permanent crease line that will ease the application process. **17-19** All pipes, fitting protrusions and substrate transition joints should be reinforced with polyester tape. **20-24** Starting at the ledge/wall joint, paint a width of WP1 onto the wall and strip up-stand that is wider than the polyester tape. Embed polyester tape into the WP1 undercoat as shown. **25-28** Paint a WP1 undercoat onto the corner walls. Starting just above the strip up-stand and working in an upward direction, bed the polyester corner tape onto WP1 coating maintaining the fold, and keeping the crease line tight against the wall corner. Use the brush to open fold and bed it onto the adjacent WP1 coated wall. **29-31** Apply a second coat of WP1 over the polyester tape brushing it firmly to ensure the polyester tape is fully embedded between the first and second WP1 waterproof coatings. **32-35** Treat pipes, fitting protrusions, and transition joints in a similar manner. Once complete, the walls are ready for waterproofing with BAL WP1. **36-40** Apply a first coat of WP1 over all surfaces stroking the brush in vertical direction. After the first coat has dried, apply a second coat of WP1 stroking the brush in an opposite horizontal direction. **41-42** Remove masking tape and clean strip and ledge. **43** The waterproofing is now complete. After the second WP1 coat has dried tiling may commence with BAL Supercote Rapid Flex Tile Adhesive and BAL Micromax Wall & Floor Grout.

